

# OS2

Italian elegance  
for doors and  
windows



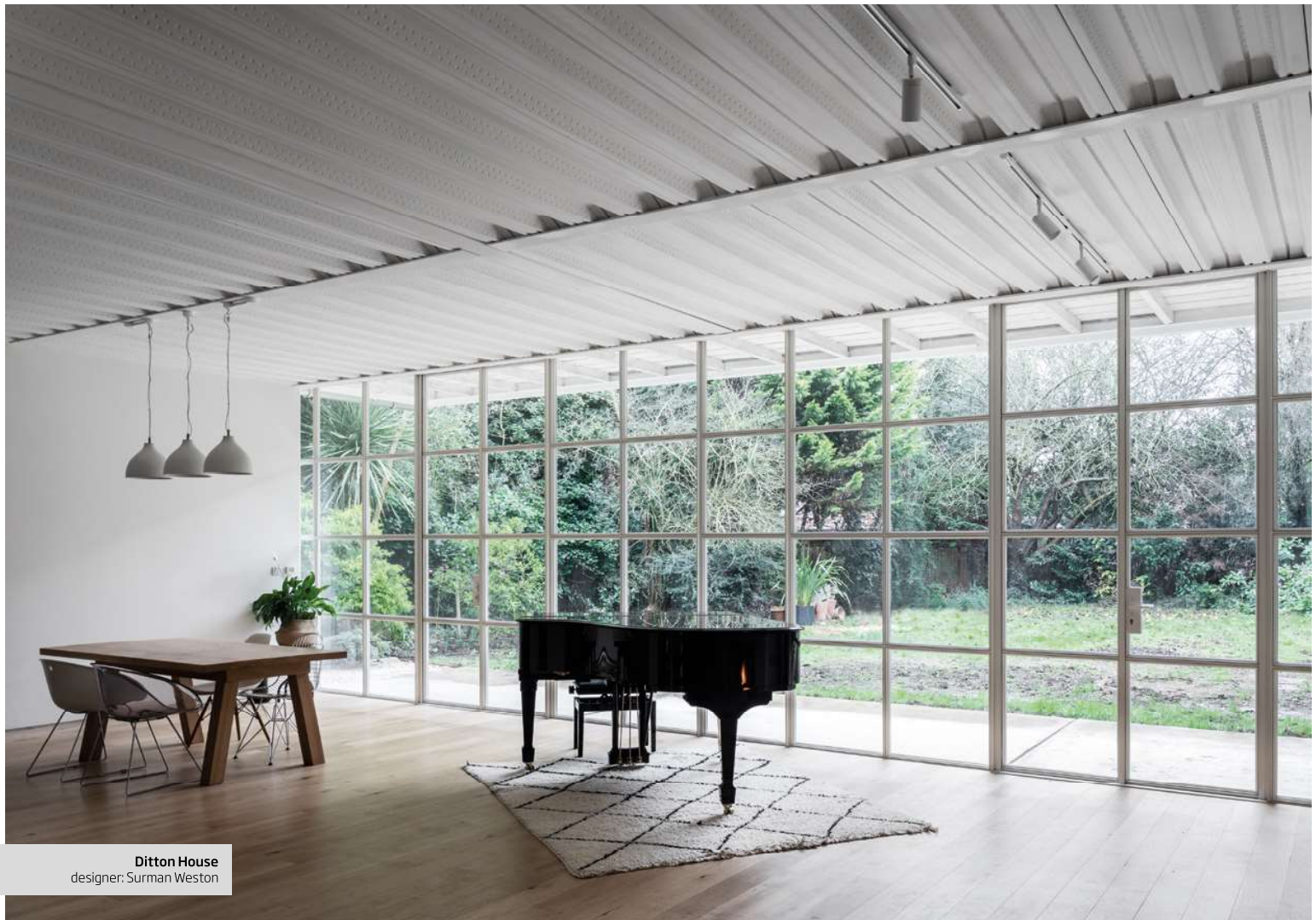
**ADI COMPASSO D'ORO**  
Winner 25 th Award



This catalogue wants to tell the OS2 window system. Winner of the "Compasso d'Oro", OS2 is a Secco Sistemi product born from the experience gained by the company in the area of windows' realization with reduced visual impact made of precious metals for architecture.

A complex of possibilities that OS2 can offer to architectural design, synthesis of years of competence in restoration and contemporary world.

6	values
8	design
16	materials
40	technology
44	variants
46	types of opening
50	<i>windows</i>
66	<i>doors</i>
80	<i>lift and slide doors</i>
90	<i>pivot</i>
100	<i>folding</i>
110	<i>anti-burglary</i>
122	accessories
124	<i>handles</i>
126	<i>glazing beads</i>
128	<i>hinges</i>



**Ditton House**  
designer: Surman Weston

## OS2 *values*

OS2 takes the name of the classification for the restoration of works of art, to remember its vocation for the past architecture, outcome of the long profitable relationship with designers. With its essential lines, the innovative types of opening and its original accessories, OS2 blends with the contemporary architecture as well.

The window of OS2 stands out for the elegance and the artisanal attention to details but especially for the happy solution of the relationship between the transparency of the glass and the solid lightness of the frame made of quality material like brass, Corten, stainless steel and galvanized steel.

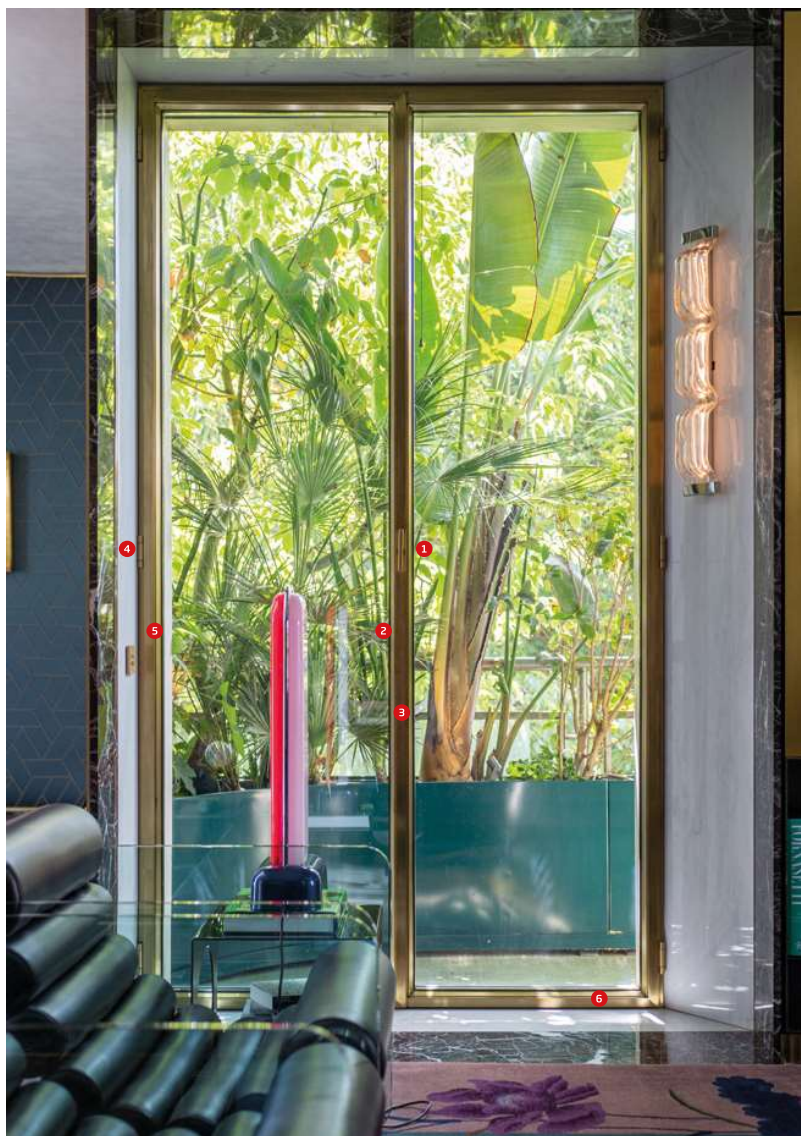


## OS2 *design*

The foundation of the system is its accurate draw, awarded with "Compasso d'Oro", the design's Oscar, with the following motivation of the jury. «The relationship between the opening and the transparent surface have always been one of the challenges of the fenestration industry. OS2 lays down a new standard by combining thermal cut and insulation, with extremely small dimensions and a interesting aesthetic flexibility thanks to the profiles in Corten, steel and burnished brass».

OS2 provides 70 different profiles to realize the preferred design of the frame, allowing to release designer's creativity and to "returning to draw the frame".

1. handles in the same material as the profile
2. glazing beads of various shapes
3. central section for the two sashes of only 62mm
4. reduced hinges, same material as the profiles
5. lateral section only 47 mm
6. constant profiles on the whole perimeter



## profile design *examples*



The central section of the two-leaved door has a reduced section while the profiles framing it is pronounced.



The glazing is measured by slender profiles with the two-leaved opening evident in the centre.



The fixed glazing is divided into two parts by a horizontal profile of the same design as the perimetral border.



The glazing is characterised by the seamless pattern and undifferentiated profiles, making the two-leaved doors much less conspicuous.

## profile design *examples*



Double-sash windows with the same design for profiles which trace the external perimeter and the central section.



In the glazing panel the profiles of fixed and openable sashes have the same design.



In the double-sash windows the thin profiles tracing the perimeter of the casement have the same design as the central section in the front view.



Perimetral profiles in the front view have the same dimensions and design as those which divide the glazing into 4 parts.



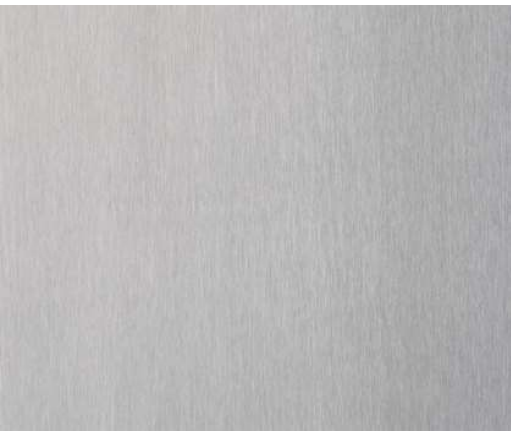
**casa di Confine**  
designer: Subissati

## OS2 *materials*

The OS2 profiles are made in solid and tenacious materials with certified quality of oxidation and corrosion resistance. Materials for Secco are a source of design too, with their natural surfaces they affect the appearance of the frame and they can catch light or reflect it, they can have warm colors or austere ones and at the same time they have non-homogeneous surfaces for a continuous variant that emphasises the craftsmanship aspect of the product. All the used metals are 100% recyclable and they have high durability to concretize the sustainability of the product.



OS2 materials



**scotch brite**  
*316L stainless steel*

iron-chrome alloy nickel  
and molybdenum,  
cold rolled with  
scotch brite finish



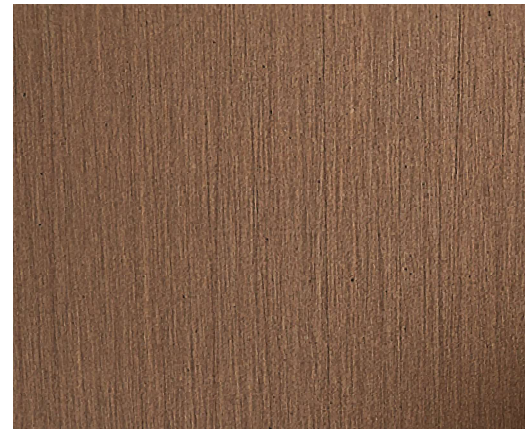
**satin-finished brass**  
*CuZn33 CW506L*

OT67 copper and zinc alloy,  
cold rolled and  
roughened, with  
satin finish



**blackened**  
*316L stainless steel*

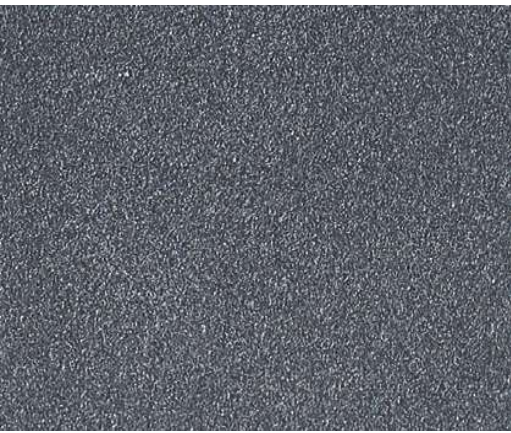
iron-chrome alloy nickel  
and molybdenum, cold  
rolled with hand  
burnished finish



**patinated brass**  
*CuZn33 CW506L*

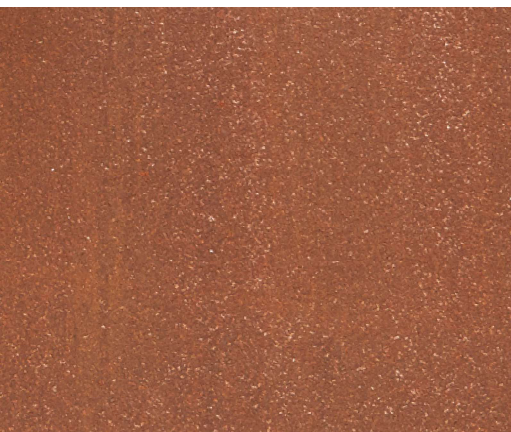
OT67 copper and zinc alloy,  
cold rolled and  
roughened,  
hand-burnished

OS2 materials



**galvanised steel**  
*FeP02 GZ 200*

Hot galvanized Iron alloy of carbon with Sendzimir system, skinpass finish. Requires liquid or powder coating



**Corten steel**  
*Fe 510 X*

Carbon iron alloy with high corrosion resistance (Cor) and tensile yield strength (ten), with oxidized finish





satin-finished  
brass

CALLE DEL FONTEGO  
DEI TEDESCHI



blackened  
stainless steel



blackened stainless steel



patinated brass



satin-finished  
brass

patinated brass



patinated brass



corten steel



patinated brass



satin-finished brass